

Road Traffic

calendar 2011



Take to the road with **BISON FUTÉ**

To help you prepare your trips

And drive under the most comfortable conditions, four driving and traffic density situations have been defined:

GREEN usual driving difficulties

ORANGE heavy traffic, difficult driving

RED very heavy traffic, very difficult driving

BLACK extremely heavy traffic, exceptionally difficult driving

To drive better day by day

The road information centres inform you in real time

► by phone at
Toll-free number: 0 800 100 200 (free call from a landline) :
(0033 892 68 78 88 from abroad)

► on the Bison Futé website:
www.bison-fute.gouv.fr

As far as possible avoid driving on RED or BLACK coloured days.

To drive in fully safety, follow the advice of Bison Futé



Before starting

Plan your trip:

- give preference to motorways which are generally safer,
- evaluate your travelling time including stops (every 2 hours);
- at major departure dates, as possible avoid Saturday between 8 a.m. and 4 p.m.;
- avoid driving at night, mainly between 2.00 a.m. and 6 a.m.

Check the general condition of your vehicle:

particularly the tyres wear and pressure.

Do not forge the safety jacket and the pre-signalling triangle:

they are mandatory for all vehicles since 1st October 2008.

Leave well rested:

beyond 17 waking hours, reflexes decrease as much as with 0,5 g of alcohol in the blood.

Obtain information about the weather conditions

- national vocal server of the French weather forecast department: 3250 (0.34 € per minute), minitel 3615 météo, www.meteo.fr website.

Consult the traffic forecasts on the www.bison-fute.gouv.fr website.

During the trip

Follow the traffic information in real time, continuously updated by the regional centres for road coordination information, by calling the 0800 100 200 (toll-free number).

Attach the safety belts, at the front and at the back.

Remain vigilant to react on time: put off your mobile phone before getting in your car and do not drink any alcohol.

Follow the authorities recommendations, particularly those announced by the variable message panels.

Be sure to have enough water in the vehicle to be able to face unforeseen situations of blocking.

Stop every 2 hours: a pause of at least 15 minutes is ideal to relax.

Double the precautions in summer during very hot spells: check the pressure of the tyres, make more frequent stops and drink water regularly.

Observe the speed limits in all circumstances and **keep the safety distances on roads and motorways.**

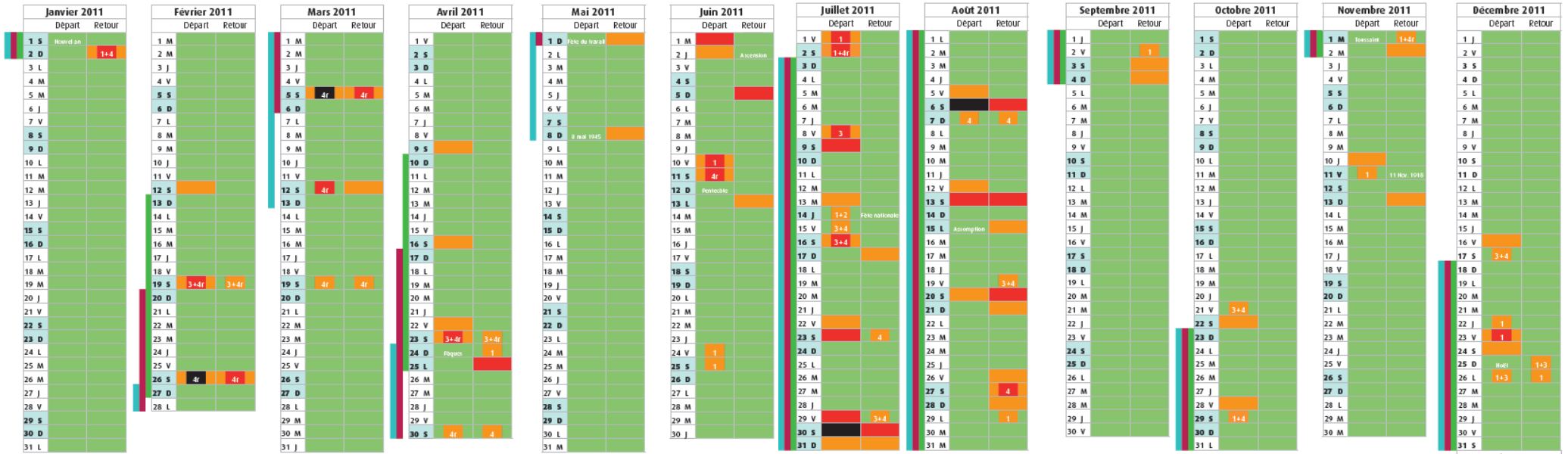


Driving less fast means reducing the risk of road accidents (by 10 to 15 %)
reducing fuel consumption (up to 15 % of saving)
and limiting the emission of greenhouse effect gases
by adopting a responsible citizen's driving behaviour



Traffic forecasts for 2011

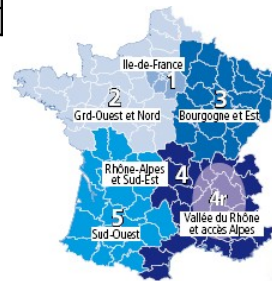
Find back the updated daily forecasts on the www.bison-fute.gouv.fr website.



Legend	State of traffic	Bison Futé zones	
Direction of departure: Towards the holiday resort	usual circulation	1 Île-de-France region	4 Rhône-Alps and South-East
Direction of return depuis les lieux de villégiature	difficult circulation	2 Great West and North	4r Rhône valley and access to the Alps
	very difficult circulation	3 Burgandy and East	5 South-West
	extremely difficult circulation		

Exemple of reading the trafic

27 August		
Departure	Return	
		In the direction of departure, everywhere in France, you meet usual difficulties of circulation
		In the direction of return, the circulation is difficult and even more difficult in Rhone-Alps and South-East of France



	ZONE A	ZONE B	ZONE C
School holidays	Caen, Clermont-Ferrand, Grenoble, Lyon, Montpellier, Nancy-Metz, Nantes, Rennes, Toulouse.	Aix-Marseille, Amiens, Besançon, Dijon, Lille, Limoges, Nice, Orléans-Tours, Poitiers, Reims, Rouen, Strasbourg.	Bordeaux, Créteil, Paris, Versailles.
Christmas 2010	18 December 2010 – 3 January 2011		
Winter 2011	26 February – 14 March	19 February – 7 March	12 February – 28 February
Spring 2011	23 April – 9 May	16 April – 2 May	9 April – 26 April
Summer 2011	2 July - 5 September		
All Saints 2011	22 October - 3 November		
Christmas 2011	17 December 2011 – 3 January 2012		

**Centre national d'information routière
111, rue Camélinat
93110 Rosny-sous-Bois**

www.bison-fute.gouv.fr

 N° Vert 0 800 100 200

APPEL GRATUIT DEPUIS UN POSTE FIXE
